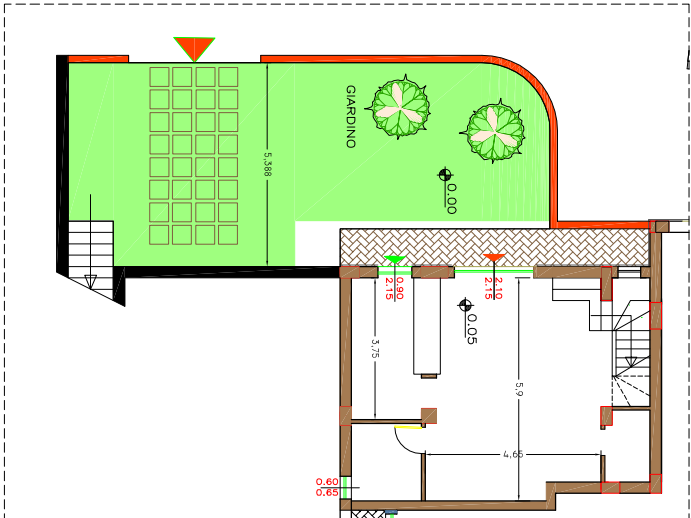
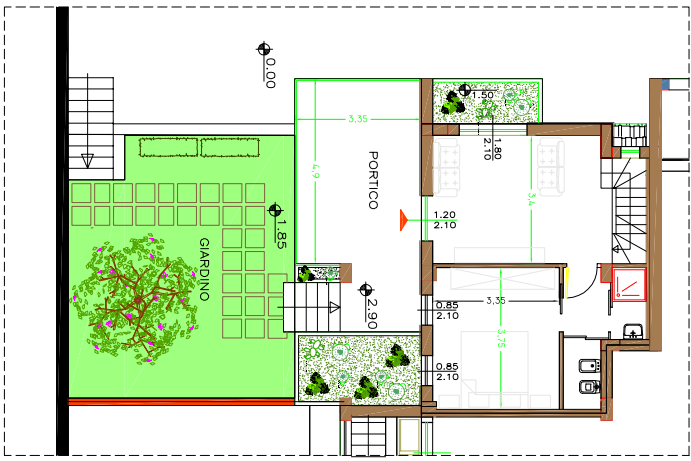


# 3A

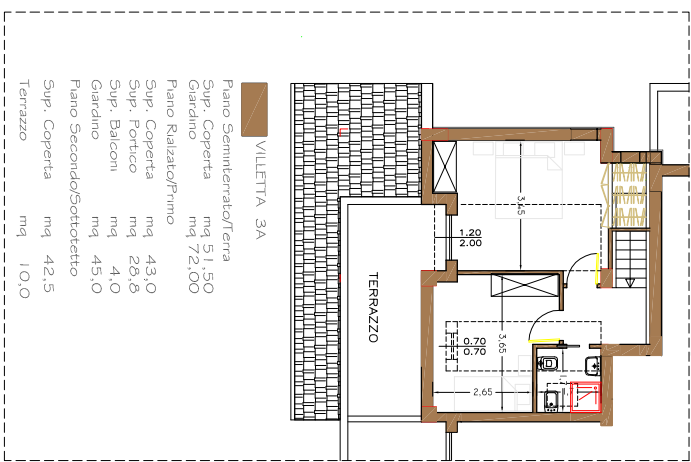
Piano Seminterrato/Terra



Piano Ralzata/Primo



Piano Secondo/Sottotetto



VILLETTA 3A

- Piano Seminterrato/Terra
- Sup. Coperta mq 51,50
- Giardino mq 72,00
- Piano Ralzata/Primo
- Sup. Coperta mq 43,0
- Sup. Portico mq 28,8
- Sup. Balconi mq 4,0
- Giardino mq 45,0
- Piano Secondo/Sottotetto
- Sup. Coperta mq 42,5
- Terrazzo mq 10,0